

# Local Services



Local Service List  
Compiled based on  
Information gathered  
electronically.

Some services may no longer  
be available.

Prior to traveling to the place  
listed, please call.



# Mental Health

Mental Health is serious business. You are NEVER alone. Share your thoughts, reach out to someone, anyone. In a crisis mode and if in need of immediate assistance, please don't hesitate to call 911.

National Crisis number is 988.

You can call or text to this statewide crisis line, 988 for Mental Health, Substance Abuse and Suicide.

## Nationwide

**988 Crisis Line for Mental Health, Substance Abuse and Suicide**

### Berrien County Mental Health / Medical Health

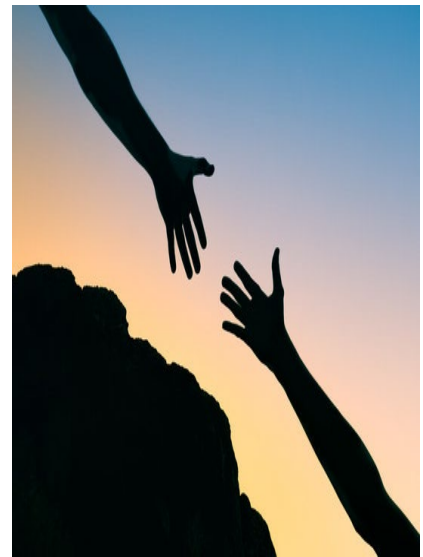
Riverwood Behavioral	269-925-0585
Berrien County Health Dept	269-926-7121
Berrien County Cancer Serv	269-429-3281

### Cass County Mental Health / Medical Health

Woodlands Behavioral	269-445-2451
Cass County Health Dept	269-782-0064

### Calhoun County Mental Health / Medical Health

Summit Pointe Behavioral	800-632-5449
Calhoun County Health	269-969-6370



## TRANSPORTATION SERVICES

### Berrien County

Berrien Bus 269-471-1100

Niles/ Buchanan Dia A Ride 269-684-5150

Twin Cities Transit (BH/SJ) 269-927-2268

### Cass County

Cass County Transit 269-445-2455

### Calhoun County

Marshall Dial A Ride 269-781-3975

Battle Creek Transit 269-966-3474

Below is a list of multiple organizations that may provide help

Some may require proof of loss, income, etc.

### Southwest Michigan Area List

#### Food Pantries / Household

Decatur Human Services Food Pantry	269-423-6474
Woodland Shores Mobile Food Pantry -Various Points	269-465-4673
Hope Resources - Coloma - clothing / food	269-202-6050
Ferry Street Resources - Niles	269-687-9860
Salvation Army - Niles	269-684-2660
Mosaic CCDA - Benton Harbor	269-932-3557
Helping Hands of Cass County - Cassopolis	269-445-8104
Hope Community Church - Niles	269-684-2770
Harbor C. Mission - various assistance Bridgman	269-426-0001
Harbor County Emergency Food Pantry and Thrift Store - Three Oaks	269-756-7444
The Church of Keeler - Food Pantry - Sometimes has free clothing	269-621-2551
A.C.T.I.O.N. Ministry Center Food Pantry	269-782-0000
All Nations SDA Church	269-473-4400
Edwardsburg Food Pantry	269-699-5870
St. Mary's of the Immaculate Conception	269-684-0637
Cooperating Ministries - Hartford	269-621-4103
St. Joseph Church Food Pantry - Watervliet	269-463-5470
Road to Hope - St Joseph	269-429-1106
Benton Harbor Soup Kitchen - Benton Harbor	269-925-8204
Michigan 211 - help finding assistance	211
All assistance resources, Women, Infant, Children, etc	<a href="http://www.michigan.gov/mdhhs">www.michigan.gov/mdhhs</a> help4berrien.org

### Career Related

Michigan Works, Berrien, Cass & Van Buren County 800-285-69675

Veteran Services - 269-983-7111

### Other Miscellaneous Organizations that may provide assistance

Boys and Girls Club Greater SW Michigan	269-926-8766
Cass County Council On Aging - Cassopolis	269-445-8110
YMCA of Michiana - Niles, St. Joseph	269-683-1552
Tri County Head Start - Multiple areas	269-657-2581
Berrien Community Foundation - Scholarships for graduating high school seniors	269-983-3304
Spero House of Niles - community support, services	269-240-7177
Empower - 403B retirement plan - Hardship withdrawal or loans – restrictions apply	800-338-4015
Councils on Aging / Senior Centers use <b>google for finding local locations</b>	

Below is a list of multiple organizations that may provide help

Some may require proof of loss, income, etc.

### Calhoun County - Marshall/Battle Creek Area

Salvation Army - Battle Creek	269-963-3640
Neigh Pantry - Battle Creek	269-965-3251
Love they Neighbor Ministries - Battle Creek	269-719-2422
North East Neighborhood Food - Battle Creek	269-969-2451
South Michigan Food Bank - Battle Creek	269-964-3663
Crossroads Church and Ministries - Marshall	269-781-9094
Church of the Nazarene Battle Creek	269-979-4565
Albion Interfaith Ministries - Albion	517-629-5260
Community Table of Albion Food Pantry - Albion	517-629-0842
Tekonsha Food Pantry at Union Church - Tekonsha	517-767-4199
Emergency Assistance - Marshall Area Community Services, food, utilities, lodging	269-781-2954
Bread of Life Food Pantry - Marshall	269-781-9094 ext 21
Community Action Battle Creek - Education and Children's Early Head start	269-965-7766
Education and Children's early head start - Calhoun County	269-965-7766
Education and Children's early head start - Marshall Office	269-781-4514
Education and Children's early head start - Albion Office	517-629-4490
Marshall United Way	269-781-3325
Michigan 211 - help finding assistance	211
Marshall Mobil Meals - Oaklawn Hospital	517-554-1459
All assistance resources, Women, Infant, Children, etc	<a href="http://www.michigan.gov/mdhhs">www.michigan.gov/mdhhs</a>

### Career Related

Michigan Works Calhoun County 269-660-1412

Veteran Services Calhoun County 269-441-6051

Many local churches provide assistance and various forms of counselling.

Services listed have not been vetted, please call or visit websites for complete information of help offered.

This is provided as a guide, with no affiliation to L.A.D.D having verified services, published only as a service to our team members.